

FOR THE **LEGENDS** OF THE ROAD



THE UPFIT YOU DESERVE

[LEGENDSOFTHEROAD.COM](https://legendsoftheroad.com)



CEILING LIGHTS

Extremely bright, motion-sensor-activated ceiling lights to dramatically enhance the cargo space in a van.



WALL / CEILING / DOOR LINERS

Extremely durable insulated interior liners. Foiled foam insulation creates a thermal barrier while deadening sound. Available in textured grey and smooth white.

GRAB HANDLES

Increase safety for drivers at loading points. High-visibility yellow steel with grippy coating for maximised safety!

WHEEL WELL COVERS

Protect van metal wheel well covers that are most prone to damage by cargo. Foamed foil insulation on back increases noise deadening.



SECURILOCK VAN LOCK

Extremely durable, premium van lock that prevents cargo theft. Made for vans in high-crime urban areas and vocations holding expensive tools.

REAR & SIDE SILL PLATES & THRESHOLDS

Protect vehicle at areas with highest traffic: the entry-points. Maximise safety for drivers getting in and out of the vehicle while holding cargo.

RIGID FLOORS & RUBBER MATS

Industry-leading anti-slip rigid flooring, and one-piece rubber mats. Maximise safety for drivers while protecting the vehicle.



**WELCOME TO THE LEGEND
UPFIT COLLECTION.**



THE UPFIT YOU DESERVE

LEGENDSOFTHEROAD.COM



CONTENTS:

| | | | |
|---|----|---|----|
| Upfit Collection | 2 | Collection: SecuriGrip & Accessories | 27 |
| Our Purpose | 6 | Insulated DuraTherm: The Ultimate Liner | 28 |
| We Take The Hits | 8 | SecuriGrip Thresholds | 30 |
| Lightening The Load | 10 | SecuriGrip Grab Handles | 32 |
| The Importance of Van Floors | 12 | Wheel Well Covers | 34 |
| Collection: Rigid Floors | 14 | SecuriLock Van Lock | 36 |
| Collection: Rubber Mats | 15 | Motion Sensor Ceiling Lights | 38 |
| StabiliGrip: The Flagship Rigid Floor | 16 | 3D Configurator | 40 |
| EVOLVE: The Lightweight Floor | 18 | The Floor of the Future is Coming | 42 |
| AutoMat-Bar: The Flagship Rubber Mat | 20 | Logo Breakdown | 44 |
| What Kind of Rigid Floor is Right for Me? | 22 | Global | 46 |
| The Importance of Van Liners | 24 | Contact | 48 |
| Collection: Van Liners | 26 | | |

**LIFE ON THE ROAD CAN BE HARD,
UNCOMFORTABLE AND UNRELENTING.
THE EVERYDAY HEROES OUT THERE
DESERVE A BETTER DAY.**

OUR PURPOSE:

**IMPROVE THE RIDE FOR THE
LEGENDS OF THE ROAD**



THE UPFIT YOU DESERVE

LEGENDSOFTHEROAD.COM



WE TAKE THE HITS

Reducing the impact of life on the road,
for you and your van.

KEEP YOUR PEOPLE SAFE

Everything we do at Legend is geared towards improving the well-being of drivers, and their vans.

PROTECT YOUR ASSETS

Our products are the toughest out there — so whatever the workload, adding Legend means your vehicles will hold their value.

WORKSPACE THAT WORKS

Upfitting with Legend means you're not only protecting your vehicle assets, but also providing a safer more effective workplace for drivers — improving the ride for the legends of the road.

DENT RESISTANT

Improved protection and health and safety means your productivity won't take a hit. A Legend upfit will ensure drivers are working safely, and effectively out on the road — and that your fleet is fit for the long haul.



THE UPFIT YOU DESERVE

LEGENDSOFTHEROAD.COM



LIGHTEN THE LOAD

Lighter liners and floors for ease of install
with the future of electric vehicles in mind.

LIGHTWEIGHT AS STANDARD

Our liners are lightweight to start with, and we have developed the industry's lightest rigid floor EVOLVE, providing vital range savings in any EV fleet.

RECYCLED AND RECYCLABLE

All Legend products are fully recyclable and made from at least 70% recycled material!

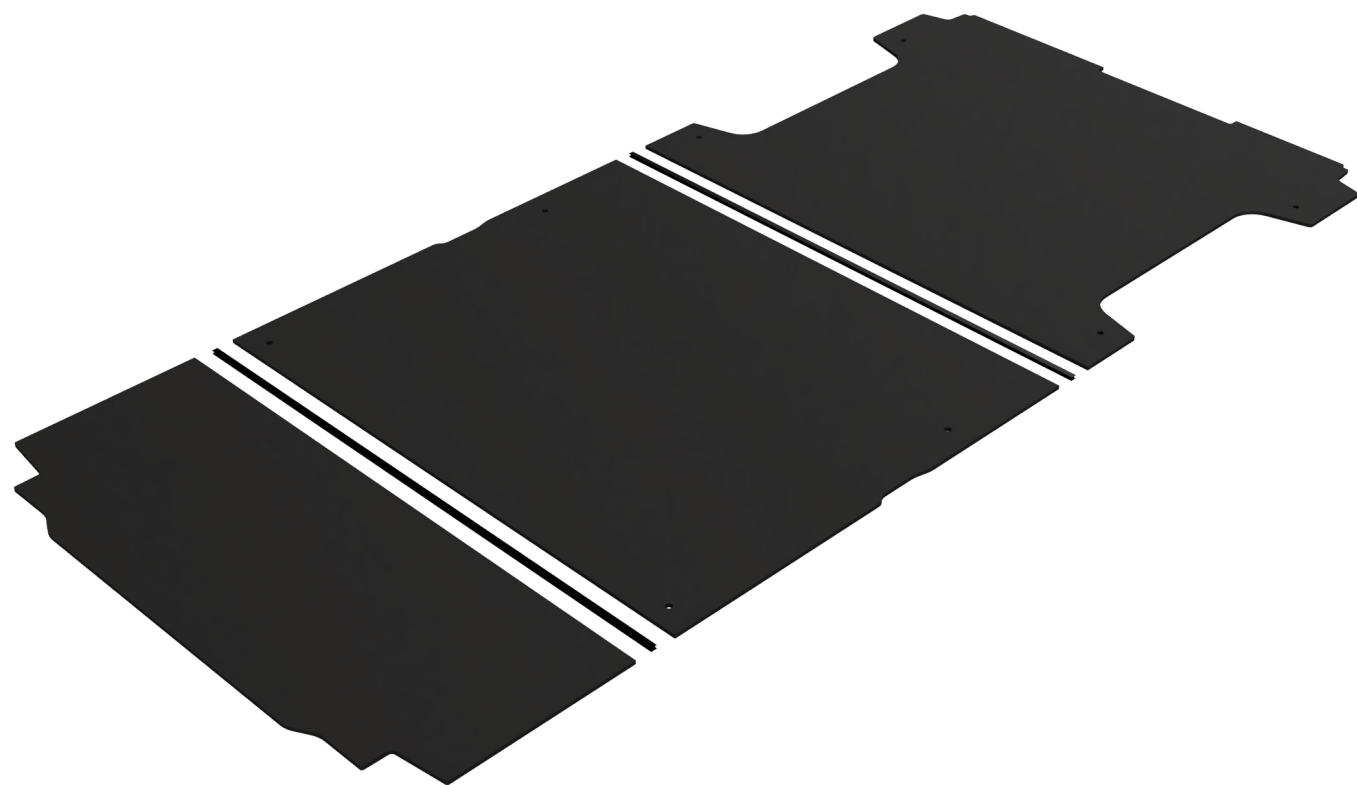
THE FIRST CHOICE FOR EV FLEETS

We're constantly developing our products to ensure we're going to be the leading partner for the fleets of the future—we're already light-years ahead of the competition.



THE UPFIT YOU DESERVE

[LEGENDSOFTHEROAD.COM](https://legendsoftheroad.com)



WHY DO YOU NEED A **RIGID FLOOR** IN YOUR VAN?

- Eliminates the unevenness of the factory steel floor with ribs to create a flat working surface.
- Anti-slip surface makes it safe for drivers to walk on in all weather conditions during their day
- Protects the bare metal van floor from damage
- Creates the foundation for a professional and tidy cargo space to represent brand
- Easy to clean & maintain





FLAGSHIP PRODUCT STABILIGRIP

THE FLAGSHIP FLOOR

Heavy-duty, widely-used, all-purpose, anti-slip-yet-skid-slideable van floor used by a wide range of vocations to maximise driver safety and productivity.

page 16



FLAGSHIP PRODUCT EVOLVE

THE LIGHTWEIGHT FLOOR

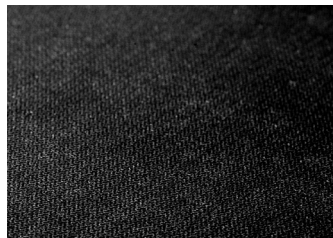
Lightweight floor designed for electric vehicles. No-drill. No-plywood. Made of 75% recycled material!

page 18

WHAT IS A FLAGSHIP PRODUCT?

Legend flagship products are highly recommended, most popular, and most widely available.

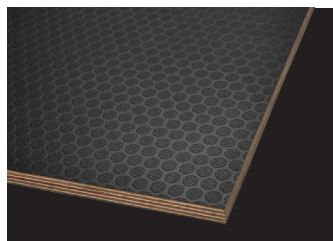
OTHER RIGID FLOORS



ECONOFLOOR

THE ECONOMY FLOOR

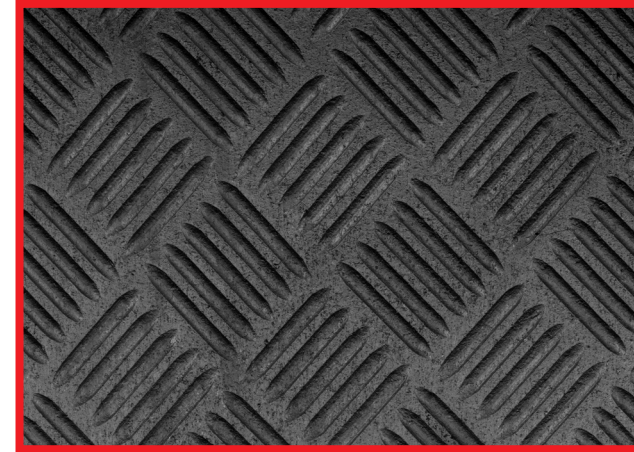
Similar to our flagship floor StabiliGrip, EconoFloor is grippy and all-purpose, but thinner.



KK-PLUS

THE COATED PLYWOOD FLOOR

Phenolic resin birch plywood one-piece floor for sliding skids & cargo.

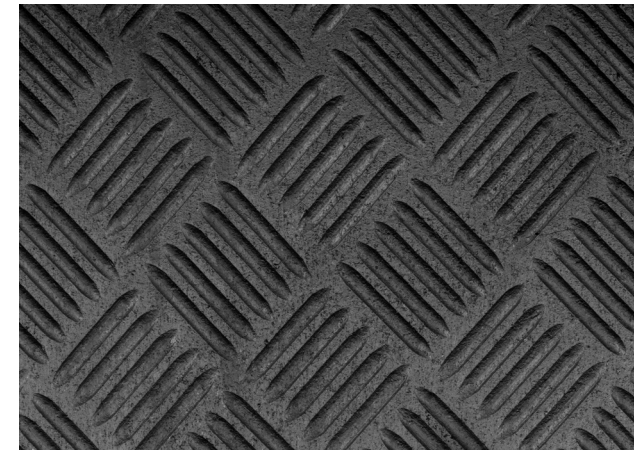


FLAGSHIP PRODUCT AUTOMAT-BAR

THE FLAGSHIP RUBBER MAT

One-piece rubber mat for protection of chassis floor and grip for driver safety.

page 20



ECONOMAT

THE THINNER RUBBER MAT

One-piece budget friendly mat for protection of chassis floor. Thinner than AutoMat-Bar.

Shown: Complete Kit of Legend's Flagship Interior Protection Products in a Mercedes Sprinter Van.



FLAGSHIP PRODUCT

STABILIGRIP

THE FLAGSHIP RIGID FLOOR

StabiliGrip has proved itself as the industry-leader of cargo van floors.

Our flagship floor is a heavy-duty composite material made from recycled materials, used by some of the biggest fleets & OEM's globally.

Its unique fine grip gives it the ability to slide cargo and still provide an extreme anti-slip surface for driver safety, making it unbeatably versatile for vocations of all kinds.



10.6mm COMPOSITE LOW-DENSITY POLYETHYLENE

- FLAT, ANTI-SLIP WORK SURFACE FOR MAXIMISED DRIVER SAFETY & PRODUCTIVITY
- FINE GRIP ALLOWS BOTH CARGO SLIDING AND ANTI-SLIP
- DIMENSIONALLY STABLE - WILL NOT WARP IN EXTREME TEMPERATURES
- IMPACT/PUNCTURE RESISTANT
- CHEMICAL/MOISTURE-RESISTANT
- EASY-TO-CLEAN



FLAGSHIP PRODUCT

EVOLVE THE LIGHTWEIGHT FLOOR

Extremely lightweight, no-drill, anti-slip composite rigid floor, designed for electric vehicles.

Already upfit in several thousand last-mile delivery E-Transits, Legend's EVOLVE Lightweight Floor is fast-gaining a name in the industry. Deemed the "floating floor", it comes with no-drill inserts for d-rings and shelving to literally "float" on the chassis ribs.

Made from 75% recycled material and 53% lighter than Legend's StabiliGrip, EVOLVE is the most sustainable, lightweight, and safe floor available for electric vehicles.



1/2" COMPOSITE LOW-DENSITY POLYETHYLENE TEREPHTHALATE

- FLAT, ANTI-SLIP WORK SURFACE FOR MAXIMISED DRIVER SAFETY & PRODUCTIVITY
- NO-DRILL-INTO-CHASSIS FASTENER KIT
- EXTREMELY LIGHTWEIGHT (53% LIGHTER THAN STABILIGRIP) TO PRESERVE RANGE OF ELECTRIC VEHICLES
- SUSTAINABLE PRODUCT MADE FROM 75% RECYCLED MATERIAL



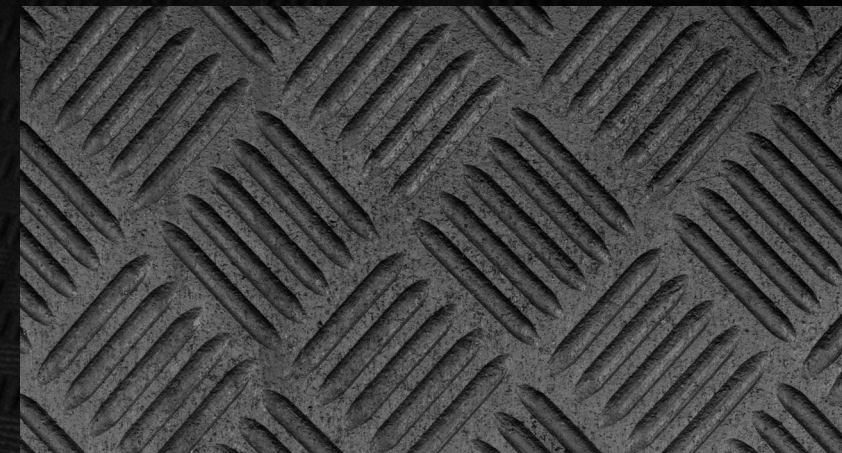
FLAGSHIP PRODUCT

AUTOMAT

THE FLAGSHIP RUBBER MAT



All-purpose, one-piece mat for base protection of bare metal van floor and some grip for drivers in the cargo space.



6mm THICK VIRGIN RUBBER COMPOUND WITH CHECKER-PLATE BAR TOP SURFACE

- INCREDIBLE TRACTION FOR ANTI-SLIP
- HEAVY DUTY INDUSTRIAL STRENGTH
- ONE PIECE MAT; NO JOINTS
- TEAR RESISTANT
- CHEMICAL/MOISTURE RESISTANT
- VIRTUALLY ODOUR-FREE
- EASY TO CLEAN

SO WHICH TYPE OF FLOORING MAKES SENSE FOR MY VAN?

| | Anti-Slip/ Safe for walking on | Rigid, Flat Surface | One-Piece Floor | Heavy-Duty | Lightweight |
|-------------|--------------------------------------|------------------------|--------------------|------------|-------------|
| STABILIGRIP | ✓ | ✓ | | ✓ | |
| EVOLVE | ✓ | ✓ | | | ✓ |
| AUTOMAT-BAR | ✓ | | ✓ | | ✓ |



My overall favorite van floor on planet Earth is Legend's StabiliGrip. With Extreme Durability now well proven, it is the best all purpose floor option for your cargo van —offering a rigid composite floor deck, with anti-slip top surface even when wet, multi-piece for easy installation, no issues with expansion/contraction, non-wood, and will never rot or splinter. It can be bolted to or thru. You can roll carts on it, walk safely on it, drop tools on it, you name it! Heavy Duty, Stability and Grip, count on it all, in StabiliGrip.

- WALT COULTER, Dealer Sales @ Legend



Shown: A collection of Legend's Flagship Interior Protection Products in a Citan Van.



WHY DO YOU NEED INTERIOR LINERS IN YOUR VAN?

WALL LINER

Protects bare van and wrap from damage to make the vehicle last longer, acts as a thermal barrier from extreme temperatures both hot and cold, and brightens up the cargo space for those in it every day.

CEILING LINER

Creates a thermal barrier to mitigate extreme heat from the summer sun for driver comfort, and completes cargo space insulation when paired with wall liner.

DOOR LINER

Protect the sheet metal or the glass in the window cavities from moving objects inside the van that could cause potential damage such as dents or broken windows.



FLAGSHIP PRODUCT INSULATED DURATHERM

THE ULTIMATE INTERIOR LINER

Extremely durable insulated liner to protect van from damage and create a thermal barrier for temperature control in the cargo space. Available for Ceiling, Wall, and Doors.

page 28



ECONOLITE

THE ECONOMY INTERIOR LINER

Budget-friendly liner for base protection used in applications where minimal protection without insulation is necessary.



FLAGSHIP PRODUCT WHEEL WELL COVERS

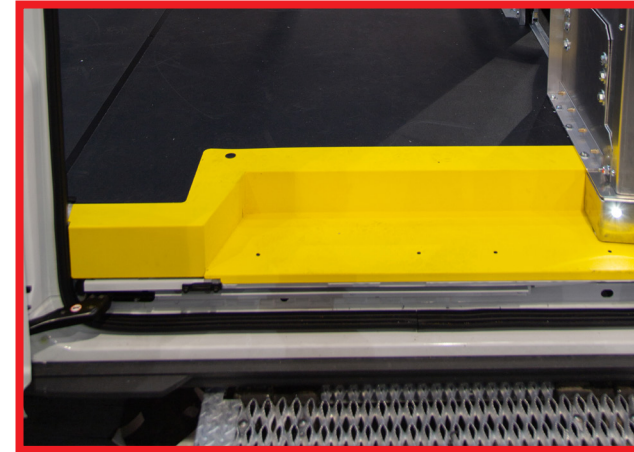
THE WHEEL PROTECTOR

Wheel wells are the first in a van to get damaged. Protect them with these covers while reducing road noise.

page 34

WHAT IS A FLAGSHIP PRODUCT?

Legend flagship products are highly recommended, most popular, and most widely available.



FLAGSHIP PRODUCT STEEL THRESHOLDS

THE HIGH-VIS SAFETY STEPS

Extremely grippy yellow or black steel side and rear thresholds to maximise safety for drivers getting in and out of the van.

page 30



FLAGSHIP PRODUCT GRAB HANDLES

THE HIGH-VIS GRIPPY HANDLES

Extremely grippy rear door grab handles to help drivers get in and out of vehicle.

page 32



FLAGSHIP PRODUCT SECURILOCK

THE PREMIUM VAN LOCK

Extremely durable, premium van lock that prevents cargo theft. European-made, best lock on the market.

page 36



FLAGSHIP PRODUCT CEILING LIGHTS

THE VERY BRIGHT LIGHT

Extremely bright, motion-sensor-activated Ceiling Lights to dramatically enhance the cargo space in a van.

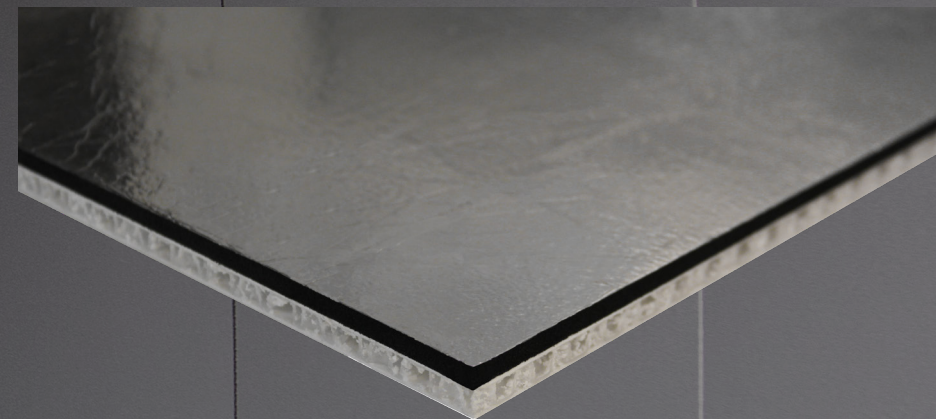
page 38

FLAGSHIP PRODUCT

INSULATED DURATHERM THE ULTIMATE LINER

Insulated DuraTherm Wall, Ceiling, and Door Liners protect bare van panels from the harshest wear and tear, and create a thermal barrier to control temperatures in the cargo areas.

Highly durable and impact resistant, these liners provide superb side panel protection to increase the lifespan and resale value of the vehicle. The foiled foam insulation deadens sound significantly to enhance operator workspaces, while creating a thermal barrier to control temperatures and maximise driver comfort.



6mm POLYPROPYLENE INSULATED INTERIOR LINER FOR WALL, CEILING, AND DOOR LINER

- SOUND DEADENING
- IMPACT / PUNCTURE RESISTANT
- LIGHTWEIGHT & EASY TO INSTALL
- PRECISION CUT TO FIT VEHICLE
- THERMAL BARRIER - INSULATES VAN
- AVAILABLE IN TEXTURED GREY FOR ULTIMATE SCRATCH RESISTANCE
- OR SMOOTH WHITE FOR BRIGHT INTERIORS
- PROFESSIONAL BRAND IMAGE



FLAGSHIP PRODUCT

STEEL THRESHOLDS

Extremely grippy yellow or black steel side and rear thresholds to maximise safety for drivers getting in and out of the van. Now available for all makes!



14 gauge steel with a special vacuumised coating that is both sturdy and non-slip. More durable than the standard factory fitted thresholds, helping to protect the entrances of cargo vans.

- MAXIMISED PROTECTION FOR HIGHEST TRAFFIC AREAS
- POWDER-COATED STEEL FOR HIGH GRIP/WEAR
- HEAVY DUTY, EXTREMELY DURABLE
- HIGH-VIS YELLOW MAKES IT EASY FOR DRIVERS TO SEE
- MAKE BRAND STATEMENT WITH CUSTOM COLOUR - AVAILABLE FOR CARGO VAN FLEETS!



FLAGSHIP PRODUCT

GRIPPY GRAB HANDLES



Extremely grippy rear door grab handles to help drivers get in and out of the vehicle.



14 gauge steel with a special vacuumized yellow coating.

- INCREASE SAFETY & EFFICIENCY BY ALLOWING OPERATORS TO LOAD IN AND OUT QUICKLY AND IN ALL WEATHER CONDITIONS, ESPECIALLY AT NIGHT
- MAKE BRAND STATEMENT WITH CUSTOM COLOUR COATING FOR CARGO VAN FLEETS
- AVAILABLE AS SET OF 2 FOR FORD TRANSIT & STELLANTIS LARGE VAN

FLAGSHIP PRODUCT

WHEEL WELL COVERS

Wheel wells are the first in a van to get damaged. Protect them, and reduce road noise, with these Wheel Well Covers available for Ford, Stellantis, and Mercedes Single Rear Wheel Sets.



- **PROTECTION:** Covers allow full protection of all bare metal panels. In a cargo van, the wheel wells are one of the first things to dent and damage quickly, because of cargo loading in and out.
- **DECREASE ROAD NOISE:** significantly deaden loud wheel and road noise by closing in wheel wells with extra padding.
- **THERMAL BARRIER:** with layers of insulation, wheel well covers complete the insulation of the van's interiors.
- **PROFESSIONAL APPEARANCE:** enhance your brand and mobile workforce appearance.

Shown: Bare Wheel Well Cover after only 3 months of vehicle use! All it takes is one pallet or piece of cargo to damage it. Wheel Well Covers prevent all of this!



FLAGSHIP PRODUCT

SECURILOCK

PREMIUM VAN LOCK



Extremely durable, premium van lock that prevents cargo theft. Made for vans in high-crime urban areas and vocations holding expensive tools, equipment, and/or cargo, this European-made lock is quickly gaining a name as the leading lock in the van market.



- HARDENED STEEL LOCK BODY - ANTI-CUTTING, ANTI-DRILLING
- WEATHER & RUST PROOF - ZINC & NICKEL COATING
- HIGH SECURITY KEY - DIFFICULT TO REPLICATE - EACH LOCK COMES WITH 3 KEYS
- EMERGENCY RELEASE CABLE - SAFETY FOR DRIVER INSIDE
- SLAM OR DEAD LOCK VERSIONS AVAILABLE
- UNIVERSAL TO ALL VEHICLE TYPES

| SECURILOCK | PUCK-STYLE LOCKS |
|--|---|
| Hardened steel body | Steel body |
| Weather-proof (Zinc+Nickel coating) | Aluminium protection |
| High Security Key, hard to duplicate | Simple key |
| Anti-cutting body | Easy to cut (soft material) |
| Anti-drilling body (key protection) | Easy to drill (not anodized) |
| Permanently fitted on vehicle door (comfortable usage) | Removable lock each time the doors are opened (uncomfortable usage) |
| Automatic & Manual locking | Manual locking |
| Master Key & Key alike available | Not indicated |
| Compensate vehicle body twisting & dropping doors | Not indicated |
| Emergency Escape from inside the loading area | No emergency escape |
| Universal lock kit | Lock kit per vehicle brand & model |
| Installation time: 20 minutes per door | Installation time: 30 minutes per door |

WATCH
HOW TO
INSTALL



FLAGSHIP PRODUCT

MOTION SENSOR CEILING LIGHTS



Extremely bright, motion-sensor-activated premium ceiling lights to dramatically enhance the cargo space.



- MOTION-SENSOR ACTIVATED, ENERGY SAVING
- VERY BRIGHT LIGHTS (1800 LUMENS EACH, COMPARED TO 2100 AVERAGE LUMENS FOR AN ENTIRE LIGHT STRIP)
- ULTRA WIDE LIGHT SPREAD
- ALL-IN-ONE "COMPLETE ASSEMBLY" SYSTEM
- FAST & EASY TO INSTALL WITH PLUG & PLAY WIRING CONNECTIONS, SIMPLE TO CONNECT TO VEHICLE POWER
- LOW-PROFILE LIGHTS, ULTRA-WIDE LIGHTSPREAD
- HIGH QUALITY, LONG-LASTING, EUROPEAN MADE LIGHTS
- COMES IN 2, 3, or 4 LIGHT KITS.

Shown: Motion Sensor Ceiling Lights at night. Check out how bright these are - and the incredible lightspread onto the area beside the van!



WATCH
VIDEO



CONFIGURE FOR ALL
MAIN MAKES & MODELS!

3d.legendfleet.com/configurator

EXPLORE THE PRODUCT IN 3D



TRANSIT

SAVANA



SPRINTER

PROMASTER



**THE FLOOR
OF THE FUTURE
IS COMING.**

2023.



THE UPFIT YOU DESERVE

[LEGENDSOFTHEROAD.COM](https://legendsoftheroad.com)

THE LOGO

represents the protection we offer our customers and their drivers — protecting their assets, their people and their profitability.

THE STRAPLINE

speaks directly to the van driver, reinforcing our promise to improve the ride for the legends of the road — by providing the upfit they deserve.

THE URL

represents our purpose, which runs through everything we do - Improving the ride for the legends of the road.



THE UPFIT YOU DESERVE

LEGENDSOFTHEROAD.COM

GLOBAL LOCATIONS

MINNEAPOLIS, MN
Warehouse & Production Facility

TILLSONBURG, ON
Headquarters & Production Facility

RAMSEY, NJ
Sales Office

GRIMSBY, UK
Sales Office

COVENTRY, UK
Warehouse & Production Facility

Our production facilities are located in Tillsonburg, ON, Minneapolis, MN, and Coventry, UK. These locations provide a global product offering, to support OEM's and large fleets around the world.

CONTACT

NORTH AMERICA HEAD OFFICE & FACTORY
56957 Hwy 3 West, Tillsonburg, ON N4G 4G8
info@legendfleet.com
(519) 688 1043

UK & EUROPE HEAD OFFICE & FACTORY
20 Canley Road, Coventry Business Park; Coventry, CV5 6BH
contactus@legendfleet.com
+44 (0)2477 688088



